

Safety Promotion in Kameoka City, Kyoto, Japan



Kameoka City

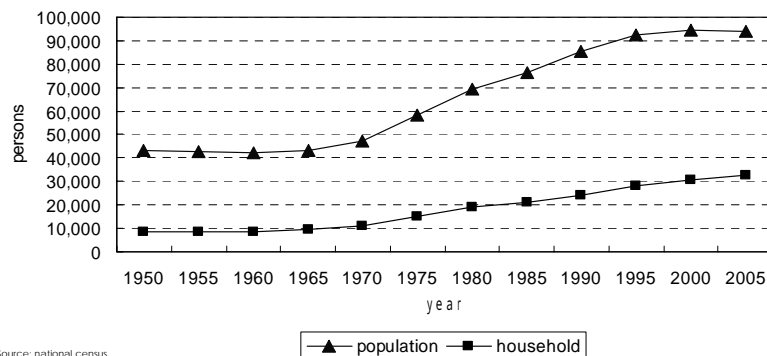
Geographical size:
224.9 km²

Population: 95,087



Population and Number of Household

- Population has not been increasing.
- However, Household has been increasing



Source: national census

Ratio of the elderly out of total population

- The ratio has been increasing by 0.5% every year

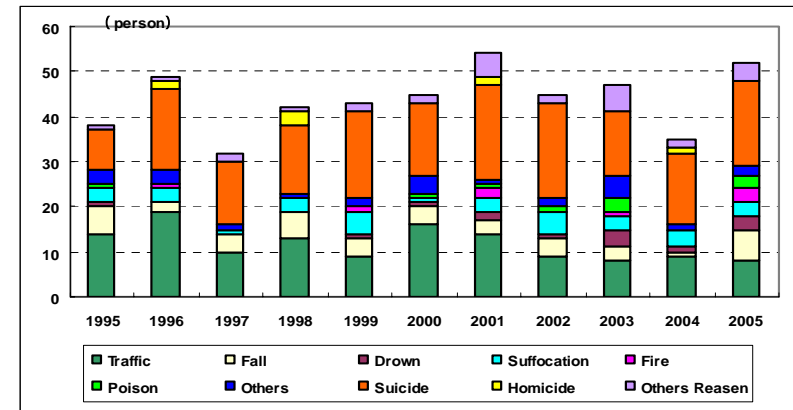
year	over 65 years old	over 75 years old	certified as being in need of care*	
			population	Ratio of population
2000	14.3%	5.9%	1,667	12.3%
2001	14.8%	6.3%	-	-
2002	15.4%	6.6%	-	-
2003	15.9%	6.9%	-	-
2004	16.4%	7.2%	-	-
2005	17.0%	7.6%	2,453	15.4%
2006Sept	17.3%	7.7%	2,553	15.5%

Top 5 out of cause of death in Kyoto (2005)

age	1st	2nd	3rd	4th	5th
0-4	Congenital anomaly	Accident	Prenatal disease	Sudden infant death	hemorrhage
5-9	Malignant neoplasm	Accident	Septicemia Hernia etc		
10-14	Accident	Malignant neoplasm	Heart disease	Suicide	
15-19	Accident	Suicide	Malignant neoplasm	Heart disease	Pneumonia
20-24	Suicide	Accident	Malignant neoplasm	Heart disease	Pneumonia
25-29	Suicide	Malignant neoplasm	Accident	Heart disease	Pneumonia
30-34	Suicide	Malignant neoplasm	Accident	Heart disease	Delivery
35-39	Suicide	Malignant neoplasm	Heart disease	Accident	Cerebrovascular
40-44	Suicide	Malignant neoplasm	Heart disease	Accident	Liver disease
45-49	Malignant neoplasm	Heart disease	Suicide	Cerebrovascular	Liver disease
50-54	Malignant neoplasm	Heart disease	Suicide	Cerebrovascular	Accident
55-59	Malignant neoplasm	Heart disease	Cerebrovascular	Suicide	Accident
60-64	Malignant neoplasm	Heart disease	Cerebrovascular	Suicide	Digestive disease
65-	Malignant neoplasm	Heart disease	Cerebrovascular	Pneumonia	Respiratory disease

Cause-specific injury and death (kameoka)

■ Suicide and Traffic accident are the most common cause of death in every year.

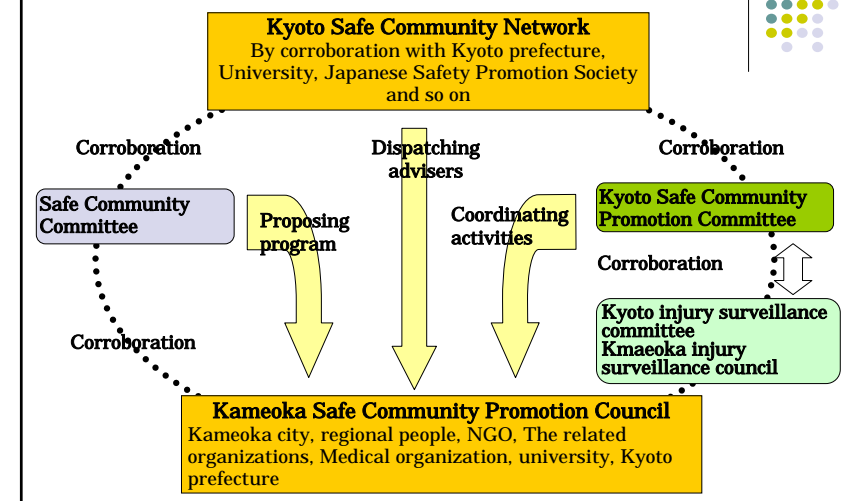


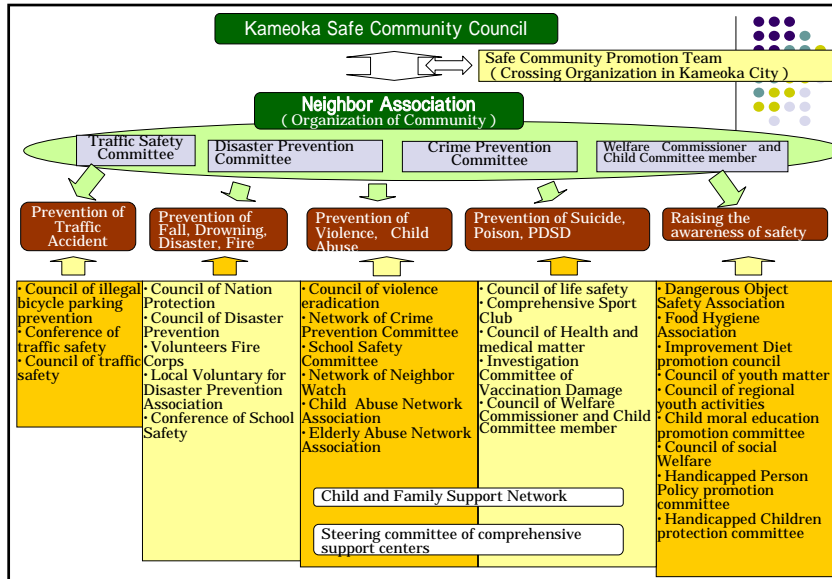
Criteria 1

An infrastructure based on partnership and collaborations, governed by a cross-sectional group that is responsible for safety promotion in their community

- Organization of a crossing promotion team in Kyoto prefecture and Kameoka city
- Building promotion system.

A promotion system in Kyoto





Discussion for activities



Workshop of neighbor association



Kyoto Safe Community Committee

Criteria 2 & 3

- Long-term, sustainable programs covering both genders and all ages, environments, and situations;
- Programs that target high-risk groups and environments, and programs that promote safety for vulnerable groups;

Programs for safety and security

We have collaborated with various organizations, and have been conducted various activities

Safety Child(0-14 years old)

- Child house #110
- #110 Cars for child protection



■ Safety Watch by volunteers

• ‘Safety watch’ volunteer groups, stand on roads in their communities to prevent crimes and traffic accident against children



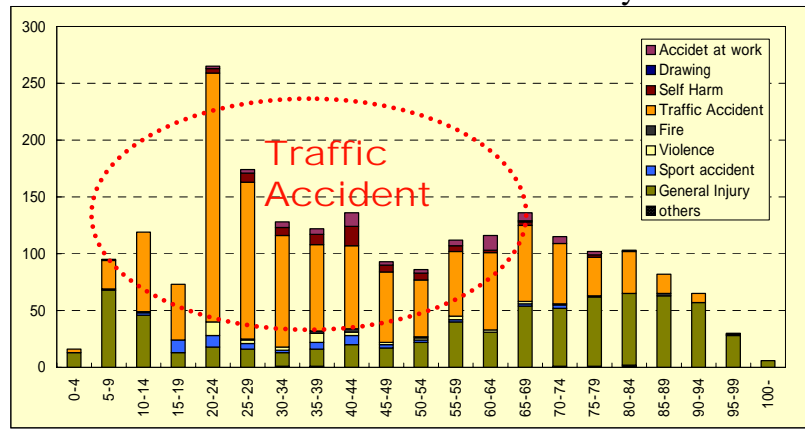
■ Safety Kids Program

School children are designated as Nantan Safety Kids after lectures and training about fire prevention, disaster prevention and first aid



Traffic accident (15-64 years old)

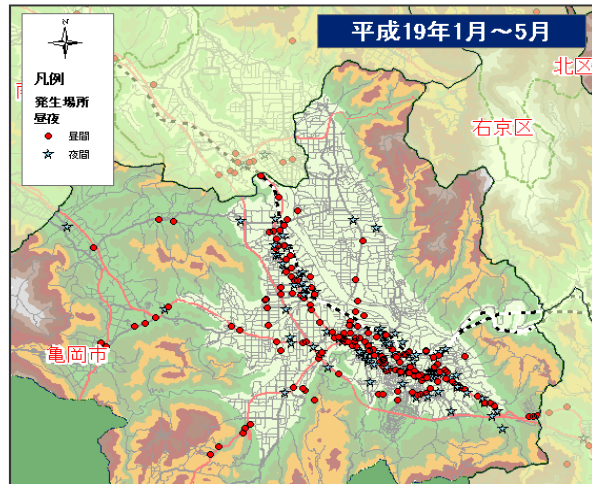
● The injured at ambulance transportation for last 3 years



● Campaign for safety drive and fastening seat belt



A map of traffic accidents



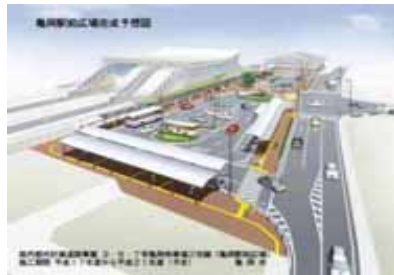
Dots on the map show accidents which happened in January and February 2007.

Bylaw for safe cycling



Safe driving course

Examination of traffic rules



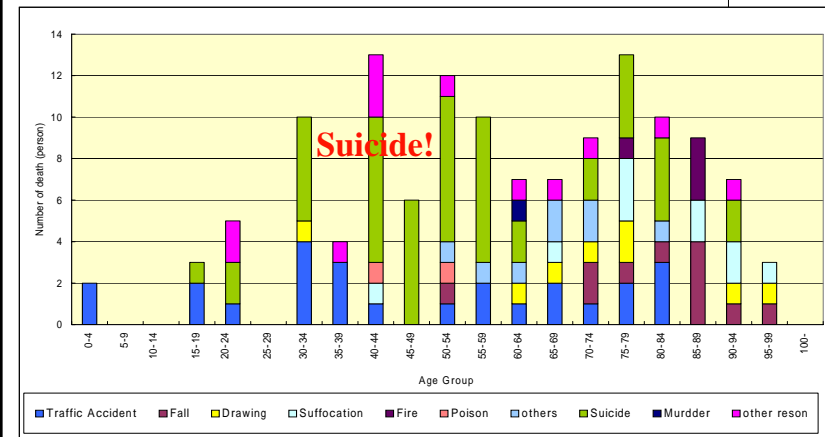
Fundamental framework plan for traffic Barrier Free

Class for barrier-free plan in elementary school



Suicide Prevention & 15-64 years old

Cause-specific injury and death for last 3 years



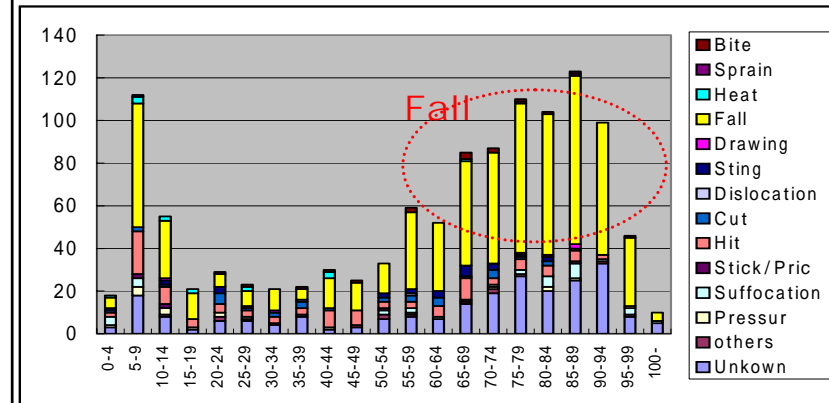
Suicide prevention

- Enacting new law for suicide prevention (National Government)
- Kyoto liaison council of suicide prevention
- Strengthening consultation service
- Mental health for workers so on



Elderly safety (64-)

■ Cause of general injury at ambulance transportation



Fall prevention for elderly



Walking Lesson

■ Program at Health Center



Exercise in Water



■ Nantan physical exercise



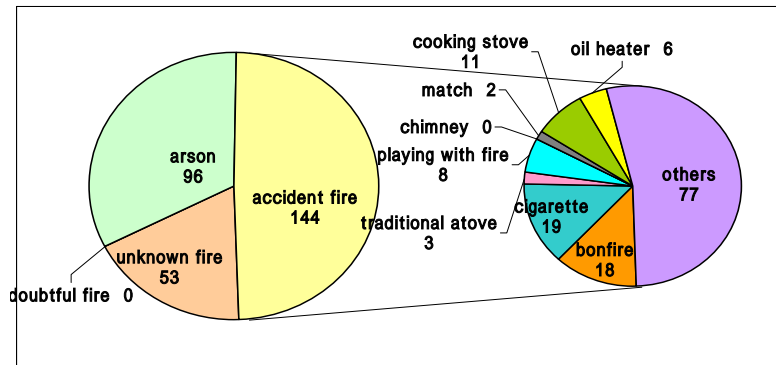
• Check a list at home



Fire Prevention

● Cause of fire for last 10 years

- Accidental fire takes about a half of the total.
- Arson takes 1/3 of total number

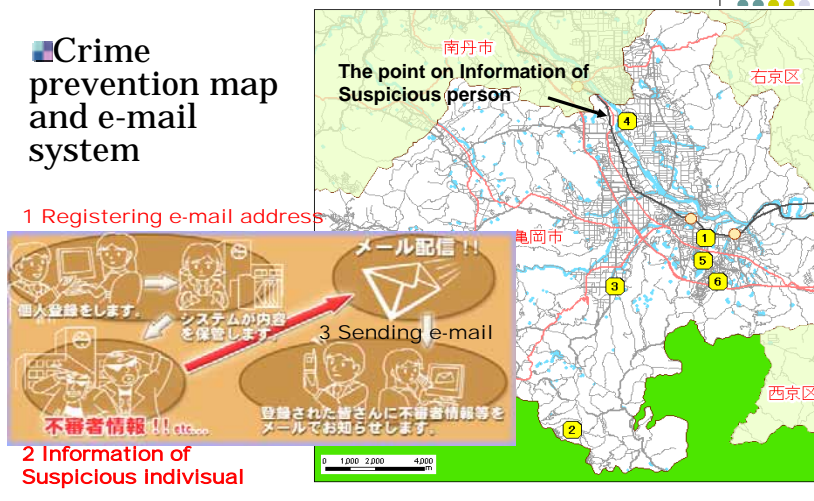


- Volunteer fire corps
- Fire and disaster prevention companies



Crime Prevention

■ Crime prevention map and e-mail system



Leisure

● Maintenance of a mountain trail

作業1

基本的に手作業

- 灌木除抜
- 倒木の除去
- 山道に被さる枝の除去
- 蔓の除去
- 山道の補修



● Safe mountain trail

今後の整備 2

■ 歩きやすい散策道



● Mountain Rescue Team at Kameoka Fire Station



First aid

■ Citizen staff for first aid



Natural disaster

- ☀ Patrol for disaster prevention
- ☀ Disaster prevention information mailing system



☀ Flood fighting drill

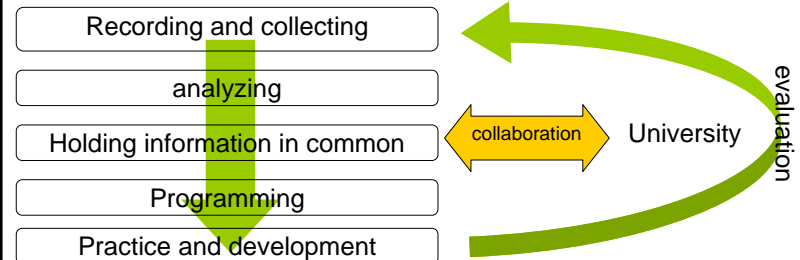


Criteria 4

Programs that document the frequency and causes of injuries

Injury surveillance

We are collecting data people got injury in Kameoka city at medical facilities.



3 hospitals and 30 clinics

Institutions	specialty
Nantan Public Hospital	Pediatric, surgery, orthopedic surgery, brain surgery, emergency, others
Kameoka Shimizu Hospital	Surgery, orthopedic surgery, brain surgery, emergency, others
Kameoka Hospital	Pediatric, surgery, orthopedic surgery, emergency, others
Clinics (30)	Pediatric (7)
	orthopedic surgery (6)
	Surgery (2)
	Otology (5)
	Ophthalmology (2)
	Dentistry (8)

■ A set of data have the following information about patients.

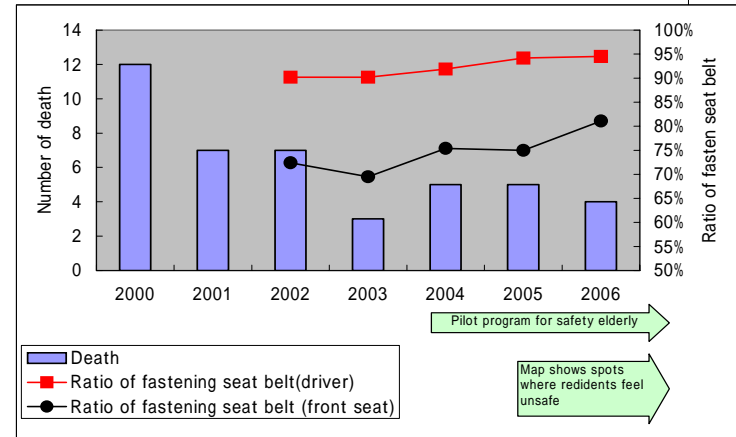
- -gender
- -age
- -date and time
- -place
- -situations when patient get injured
- -cause of injury
- -severity of injury
- -symptom of injury
- -injured parts of body

Criteria 5

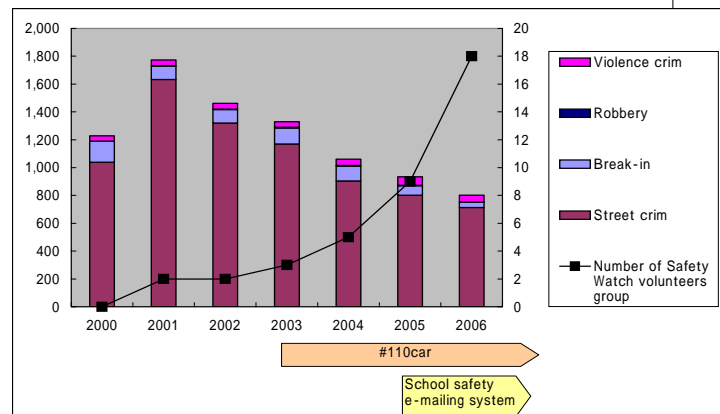
Evaluation measures to assess their programs, processes and the effects of change

The effect of safety promotion programs is evaluated by trend of injury such as change of number of injury or accident.

Number of death by traffic accident and result of activities



Number of street crimes and result of activities



Criteria 6

Ongoing participation in national and international Safe Communities networks

National level

- Involvement of Japanese Association of safety promotion
- Accepting study visits from other communities

International level

- The 14th international Safe Community Conference
- The 3rd Asian Safe Community Conference
- The 16Th International Safe Community Conference
- The Korean Safe Community Symposium In the Jeju Island
- Study visit to Safe Communities in Sweden and Finland
- Study Visit to Safe Communities in Canada