

産
業

Industry



融合と進化

工芸品から精密機器まで、京都には匠の技と進取の精神が息づいています。

伝統と革新、地域と世界をつなぎながら新境地を開く

京都各地のイノベティブなものづくりとその現場に迫ります。

Fusion and Evolution

From traditional handicrafts to precision instruments, Kyoto thrives on master craftsmanship and the spirit of innovation. Experience firsthand examples of innovative craftsmanship from all over Kyoto, where tradition and innovation come together and the linkage of local and global forges new frontiers.

1 京都工芸染匠協同組合
Kyoto Cooperative Association of KOUGEISENSHO

2 デザイン椽
Design Tochi

コアマシナリー株式会社／有限会社芳賀製作所
CoreMachinery,Inc ／ HAGA Manufacturing Co., Ltd.

株式会社アカツキ製作所
AKATSUKI MFG.CO.,LTD.

京都北都信用金庫
KYOTO HOKUTO SHINKIN BANK

3 京すだれ川崎
Kyo-sudare Kawasaki

KYOTO gishi*design
KYOTO gishi*design

株式会社溝川 × 有限会社三葉商事
Mizokawa Co., Ltd. × Mitsuba Shoji Co., Ltd.

リバティ × 丸仙株式会社 × COS KYOTO株式会社
Liberty × Marusen Co., Ltd. × COS KYOTO Co., Ltd.

株式会社佐藤喜代松商店 × K T C
SATO KIYOMATSU SHOTEN CO., LTD × KTC

1-1

Kyoto Yuzen Caftan Dyed with the Colors of Kyoto's Four Seasons

What is Kyoto's traditional craft, Kyo-Yuzen?

Kyo-Yuzen is said to have originated during Japan's Edo period, around the Genroku era, when Miyazaki Yuzen-sai devised this unique dyeing technique. It's a sophisticated art form known for its highly skilled hand-drawing and dyeing techniques applied directly onto fabric. Kyo-Yuzen is considered a culmination of comprehensive artistry, characterized by its painterly colors.

Dyeing a caftan with the four seasons of Kyoto.

For the upcoming Osaka-Kansai Expo, we created the first-ever Kyo-Yuzen Caftan. This traditional garment, primarily worn in Islamic cultures, was dyed using authentic Kyo-Yuzen techniques. We're exhibiting new works that vividly portray Kyoto's four seasons, aiming to convey the profound allure of both Kyoto and Kyo-Yuzen to a global audience.



Kyoto Cooperative Association of KOUGEISENSHO
97 Nishirokaku-cho, Nakagyo-ku, Kyoto-City

1-2

Kyo-Yuzen Saree A New Global Challenge

Kyo-Yuzen's New Challenge

We have created the Kyo-Yuzen Saree, a vibrant new expression of Kyo-Yuzen reaching out to the world. This innovative piece is a South Asian ethnic garment, the saree, expertly dyed using traditional Kyo-Yuzen techniques. We're showcasing its appeal to people worldwide through exhibitions held both in Japan and internationally, including in New Delhi, the capital of India.

Note the "design."

A saree is unique for its characteristic of being worn by wrapping a single rectangular piece of fabric around the body, offering the freedom for diverse expressions. Our new "Kyo-Yuzen Saree" collection features Kyo-Yuzen patterns that reflect the beauty of nature throughout Kyoto's four seasons.



Kyoto Cooperative Association of KOUGEISENSHO
97 Nishirokaku-cho, Nakagyo-ku, Kyoto-City

2-1

HARIGANE

Innovative textile "HARIGANE"

HARIGANE is an innovative textile that combines Japanese traditional technology with modern sensibilities. It proposes new beauty to spaces by fusing opposing elements such as light and shadow, design and function, tradition and innovation.

Beautifully Decorates Spaces as Wall Decoration

Although translucent, it blocks lines of sight to ensure a private space. By allowing light to pass through, it creates a bright and open space

Can Cover the Exterior Walls of a Building

Its lightness and unique beauty give buildings a new look, accentuating their individuality while blending in with the urban landscape.



KYOTO HOKUTO SHINKIN BANK

Design Tochi

166 Migochi, Yosano-cho, Yosa-gun

2-2

Aluminum Kumiko Craft Lamp

Advanced Craft

This is a collaboration unique to Kyoto, where tradition and cutting-edge technology coexist in harmony.

Kumiko Craft and Precision Metal Cutting

The shade, composed of 906 parts, is made using precision metalworking techniques employed in advanced industries. The accuracy is $\pm 1/1000$ of a millimeter. The intricate geometric pattern created by these precisely finished components maintains its shape through the equilibrium of forces pushing against each other.

Kurotani Washi and Resin

The Japanese paper that warmly diffuses light is Kurotani washi from Ayabe City, Kyoto Prefecture. The resin covering it represents new technology that has recently begun to be used for accessories and art, rather than as a conventional adhesive. By encapsulating paper, cloth, gold leaf, and other materials, it proposes unprecedented aesthetic values.



KYOTO HOKUTO SHINKIN BANK

CoreMachinery, Inc. / HAGA Manufacturing Co., Ltd.

Miwa-cho Fukuchiyama-city / Omiya-cho, Kyotango-city

2-3

Precision Technology: Creating Balance in Your Life

Contributing to "Healthy and Comfortable Living"

In recent years, poor posture (slouching) caused by long hours of desk work and smartphone use has become a serious problem, with increasing cases adversely affecting learning ability and health maintenance. We contribute to "healthy and comfortable living" not only for junior and senior high school students in their growth period, but also for people of all generations.

Specialized Manufacturer of Spirit Levels

Akatsuki Seisakusho was established in 1919 (Taisho 8). Since then, we have developed products centered on analog (bubble tube) spirit levels, which have achieved extensive sales records, particularly in the industrial sector.

Providing Stability in Daily Life

Our spirit levels provide stability not only in construction and industrial fields, but also in everyday life. They create balance and contribute to life at home, in the office, and even in healthcare settings.



KYOTO HOKUTO SHINKIN BANK

AKATSUKI MFG.CO.,LTD.

53 Ishiburolnokurashinmachi, Ayabe-City

2-4

Connecting Umi no Kyoto's Traditions and Local Industries to the Future

Community-Based Financial Institution

Founded in 1901 as Miyazu Shinyo Kumiai (Miyazu Credit Union), this credit union has a history of more than 120 years. It operates across a wide area of 13 cities and four counties, primarily in northern Kyoto Prefecture and the neighboring prefectures of Hyogo and Fukui.

Proactive Approach to Community Revitalization

As a financial institution providing solutions to local issues, we engage in activities to energize the community, such as increasing local business sales, promoting their appeal, collaborating with various institutions, providing useful information to business operators, and building communities.

Supporting Companies Working on Social Issues

Rather than merely pursuing profit, we work to realize sustainable local communities through our "Social Enterprise Certification System" and "Social Good Loans," which focus on social impact in terms of Environmental, Social and Governance (ESG) and Sustainable Development Goals (SDGs).



KYOTO HOKUTO SHINKIN BANK
2054-1, Tsuruga, Miyazu-City

3-1

Continuing to Create for Continuous Use Makomo Dome

A Serene Space for Mind and Body Balance

The Makomo Dome is perfect for meditation, relaxation, or even as a cozy spot for pets and children. Enjoy this special space, enveloped in natural fragrance and warmth.

Makomo: A gentle material born from nature.

Makomo is a type of grass in the rice family that grows in paddy fields. It's a traditional Japanese material, deeply connected with nature, historically used for food, weaving, and even in sacred settings.

Makomo's New Possibilities Extending Beyond Tradition

Makomo has long been cherished in settings like shrines and tea rooms. While its use has become more limited in recent years, the Makomo Dome offers a new way to enjoy its unique appeal in contemporary life.



DESIGN WEEK KYOTO

Kyo-sudare Kawasaki

14-3.Kataboko,Chihara, Chiyokawa-Cho, Kameoka-City

3-2

Keep creating to keep using: Gradient bamboo blinds.

Bamboo blinds crafted with rare domestic bamboo splints.

Crafted from 2mm-wide rounded bamboo splints, each one meticulously shaved by one of Japan's last remaining domestic bamboo artisans. These precious materials originate from Kyushu.

Beautiful bokashi (gradation) expression, inspired by kimonos.

Inspired by kimono bokashi dyeing, each bamboo splint is individually dyed and hand-woven to create a stunning gradient. This is a one-of-a-kind sudare, radiating Japanese aesthetic beauty.

Tools for a Life with Nature, Made to Last 100 Years.

Bamboo matures in just one to two years, and our sudare are designed to be repaired and used for decades. When their purpose is fulfilled, they return to the earth, embodying sustainable craftsmanship in harmony with nature.



DESIGN WEEK KYOTO

Kyo-sudare Kawasaki

14-3.Kataboko,Chihara, Chiyokawa-Cho, Kameoka-City

3-3

Prosthetic Devices Blending with Nature 「Ainoha Soue」Prosthetic Leg Foam Covers

A design that makes the entire prosthetic leg appear as if it's enveloped in indigo leaves.

This design expresses a sense of unity with the body and harmony with nature through indigo dyeing. The silhouette, resembling leaves embracing the body, is more than mere decoration; it symbolizes the connection between the prosthetic leg and the body.

Dyes and Surface Treatments Appealing to Sight and Touch

This design features organic patterns created by shibori dyeing, combined with a textured surface reminiscent of muscles and leaf veins. It's thoughtfully crafted to consider both light reflection and tactile feel.

It can also serve as an objet d'art to enjoy indigo hues in everyday spaces.

When not being worn, it transforms into an art object, "Soui Komogomo" allowing you to enjoy the beauty of indigo as it blends into any space.



DESIGN WEEK KYOTO

KYOTO gishi*design

29-4 Kohata Hanazoroe, Uji-City

3-4

A Stool Where Creators and Users Co-create, and Memories Endure

Upcycling Old Materials to Connect Cherished Memories

The wood for these stools comes from materials salvaged from buildings damaged in the Noto Peninsula Earthquake. By transforming these discarded materials into something new, we imbue the stools with the hope of "connecting memories."

Joined by Traditional Nail-Free Craftsmanship.

The legs of the stool are assembled using "wari-kusabi-hozo-tsugi" (split-wedge tenon joinery), a traditional technique that uses no nails. This craftsmanship shines through in the meticulous work, reflecting the artisan's pride.

Upcycling Discarded Fabrics with Embroidery and Design to Connect Memories.

For the cushion fabric, we used discarded Tango Chirimen, a traditional silk crepe, that had been stored in a Tango weaving mill's warehouse. Through embroidery techniques, we've expressed cherished memories as designs, breathing new life and remembrance into the fabric.



DESIGN WEEK KYOTO

Mizokawa Co., Ltd. × Mitsuba Shoji Co., Ltd.

104 Kuchiono Omiya-cho Kyotango-City

3-5

Liberty × Marusen Special Collection

A Collaboration Between Two Companies Celebrating 150 Years of History

This is a commemorative Furoshiki (traditional Japanese wrapping cloth) from a collaboration between Liberty, a British company founded in 1875, and Marusen, a Tango Chirimen workshop founded in the same year. It is being sold at the British Pavilion.

An Homage to Culture and Craftsmanship

This collection is an homage to travel and the yearning for the East, influenced by Liberty's founding couple who visited Kyoto during the Meiji era. It also pays respect to the craftsmanship and aesthetic sensibilities both brands have cherished throughout their histories.

A Special Trip to Kyoto, Where Encounters and Learning Were Born

This collaboration came to fruition from a trip by Liberty company members to the Tango region in northern Kyoto. We offer special programs like this, providing opportunities to experience Kyoto's unique climate, culture, and craftsmanship.



DESIGN WEEK KYOTO

Liberty × Marusen Co., Ltd. × COS KYOTO Co., Ltd.

Umekoji MARKEt 3F, 34 Suzakuhozo-cho, Shimogyo-ku, Kyoto-City

3-6

Ornamental Art Tool: Urushi Ratchet Handle

High Precision and Functional Beauty as a Tool

This new genre of craftsmanship merges highly precise, functional tools with the traditional art of Urushi lacquer decoration. The result is a "fine art craft" that's not only a tool but also beautiful to admire.

Decorative Beauty Culminating Traditional Techniques

Each piece is meticulously handcrafted by skilled artisans, utilizing quintessential Japanese lacquerware techniques such as maki-e, byakudan-nuri (sandalwood lacquer), and raden (mother-of-pearl inlay).

Kyoto Innovation from Cross-Disciplinary Collaboration

This ornamental art tool is the result of a collaboration between two Kyoto manufacturing companies from distinct fields: KTC, a precision machinery manufacturer, and Sato Kiyomatsu Shoten, a traditional craft workshop. (Project cooperation: Kyoto Municipal Institute of Industrial Technology)



DESIGN WEEK KYOTO

SATO KIYOMATSU SHOTEN CO., LTD × KTC

105 Hiranomiyaniishi-cho Kita-ku Kyoto-City

A Spatial Design Covered in Kyo-Kawara “Kimono Tiles” & Featuring Non-Verbal Expression through Images and Music

This experience enables visitors to deeply engage with Kyoto’s future and past through a minimalist and serene environment unified by original Kyo-Kawara “Kimono Tiles.”

Non-verbal images and audio are also integrated in harmony with the environment, expressing its multifaceted appeal.



Video introduction



Mulberry Fields

Location: Kyotango-City (Kyotango-City)
Cooperator: Santoku



Silk Glass

Location: Studio
Cooperator: ITOKO Co.,Ltd.



Silk Cocoons

Location: Studio
Cooperator: Tango Textile Industrial Association



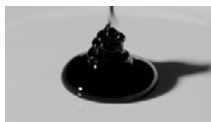
Kyoto Black Montsuki (Crest) Dyeing

Location: Kyoto Montsuki Inc. (Nakagyou-ku, Kyoto-City)
Cooperator: Kyoto Montsuki Inc.



Machine-woven Textiles

Location: Kojima Orimono Co., Ltd.
(Kizugawa-City)
Cooperator: Kojima Orimono Co., Ltd.



Dripping Lacquer

Location: Studio



Wisteria Thread

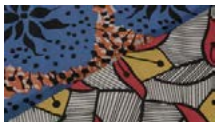
Location: The Fuji-ori Folk and Community Center
(Miyazu-City)
Cooperator: The Association for Preservation
of Tango Fuji-ori



Lacquer-tapping

Location: Yakuno-cho, Fukuchiyama-City (Fukuchiyama-City)
Cooperator: Tanba Urushi

Video introduction



African-print Fabric

Location: Studio
Cooperator: AFRIKA DOGS Inc.



AFRIKA DOGS Inc.

Location: AFRIKA DOGS
(Shimogyo-ku, Kyoto-City)
Cooperator: AFRIKA DOGS Inc.



Mother-of-pearl Woven Thread

Location: Studio
Cooperator: Tamiya Raden Ltd.



Sparkling Seashell

Location: Studio
Cooperator: Tamiya Raden Ltd.



Kyogawara (Kyoto Roof Tiles)

Location: Kyogawara Co., Ltd.
Asada Kawara Factory
(Fushimi-ku, Kyoto-City)
Cooperator: Kyogawara Co., Ltd.
Asada Kawara Factory



Sahari Orin (Japanese Singing Bowl)

Location: Nanjo Kobo Ltd. (Uji-City)
Cooperator: Nanjo Kobo Ltd.



Erica

Location: Advanced Telecommunications Research Institute International
Deep Interaction Laboratory Group
Hiroshi Ishiguro Laboratories (Seika-cho)
Cooperator: Advanced Telecommunications Research Institute International
Deep Interaction Laboratory Group
(JST ERATO ISHIGURO Symbiotic Human-Robot Interaction Project)
(JST Moonshot R&D Goal 1 Avatar Symbiotic Society Project)



Harmony between Humans and Machines

Location: OMRON COMMUNICATION PLAZA
(Shimogyo-ku, Kyoto-City)
Cooperator: OMRON Corporation

Video introduction



Sensing Technology

Location: OMRON COMMUNICATION PLAZA
(Shimogyo-ku, Kyoto-City)
Cooperator: OMRON Corporation



Microbial Culture System Converting GHGs into Resources

Location: Symbiobe Inc.
(NishiKyo-ku, Kyoto-City)
Cooperator: Symbiobe Inc.



Table Tennis Robot "FORPHEUS"

Location: OMRON COMMUNICATION PLAZA
(Shimogyo-ku, Kyoto-City)
Cooperator: OMRON Corporation



X-ray Generator

Location: Shimadzu Foundation Memorial Museum
(Nakagyo-ku, Kyoto-City)
Cooperator: Shimadzu Corporation



Chest X-ray Taken with the DIANA X-ray System

Location: Shimadzu Foundation Memorial Museum
(Nakagyo-ku, Kyoto-City)
Cooperator: Shimadzu Corporation

The Concept of Jun'on Haikei

Jun'on Haikei is a collection of the sounds of present-day Kyoto Prefecture, in combination with sounds documented in historical records and other sources, that has been enhanced with other compositions to create a unique soundscape.

In 1996, the Ministry of the Environment (known as the Environment Agency at the time) designated the “100 Soundscapes of Japan”—a collection of sounds recognized for their particular significance in maintaining Japan’s unique acoustic environment. The Ministry accepted submissions of a broad range of environments (soundscapes) featuring sounds that communities across the country cherish as local symbols and wish to preserve for future generations. Nearly 30 years have passed since then, and it is time to revisit the sounds of Kyoto Prefecture. Today, we are witnessing the acceleration of global warming and the seasons are gradually blending together. Under these circumstances, mountains, forests, and other elements of nature are becoming more important and precious than ever. Kyoto Prefecture is blessed with a rich natural environment, where beautiful sounds can still be found. Field recordings have been made to preserve them, with the hope that no more of the environment will be lost. This collection also contains newly recorded sounds beyond those already recognized in the previously mentioned “100 Soundscapes of Japan.”

Works of literature also contain many descriptions of sounds. Before the invention of recording technology, people had been preserving sounds through verbal descriptions since ancient times. Preserving sounds through language in this way is also a form of field recording.

Field Recording List

Part-1 Rurikei stream (Nantan City) Wharf (Ine Town) Maizuru Port (Maizuru City) Miyazu Bay (Miyazu City) Iwashimizu Hachimangu Shrine (Yawata City)

Part-2 Kyoto Imperial Palace gravel (Kyoto City) Kiyomizu Temple (Kyoto City) Deer (Kyoto City) Mount Oe (Fukuchiyama City) Chirimen Kaido Tenmangu Shrine (Yosano Town)

Part-3 Kotohiki Beach (Kyotango City) Kototaki Falls (Kyotamba Town) Uji River (Uji City) Shinpukuji Temple water harp (Kameoka City) Myoshinji Temple (Taizo-in) water harp (Kyoto City)

Part-4 Ayabe-Ohashi Bridge, Yura River (Ayabe City) Minoyama Bamboo Grove (Yawata City) Koshoji Temple (Uji City) Kosei Water Park (Kameoka City) Shisendo Temple Deer Dance (Kyoto City) Gokonomiya Shrine (Kyoto City) Thunderstorm (Kyoto City)

Written Description Field Recordings List

Ohara, The Tale of the Heike: The sounds of bells, deer, and insects

Nonomiya, The Tale of Genji: The sounds of insects, wind through the pine trees, and court music instruments

Uji, Man' yoshu, two poems (1699 and 1700) composed on the Uji River: the sounds of geese and the river

Hojoji Temple, Eiga Monogatari, Vol. 17, Omugaku: Court music performances

Tango, Tango no Kuni Fudoki: Voices lamenting lost works and singing

Fukuchiyama, Oeyama Ekotoba: The sounds of thunder and ritual music

Iwashimizu Hachimangu Shrine, Noh Playwright Zeami, Yumiyawata &

Hojogawa: Mysterious music and the sounds of nighttime ritual music

Hoshoji Temple, Ben no Naishi Nikki: The sounds of sarugaku theater performances in the back of the temple and bells

Junichiro Tanizaki, Senkantei, Yume no Ukihashi: The sounds of bamboo tubes filling with water and clacking against stone

Kotohiki Beach, Kiuchi Sekitei, Unkonshi: The sounds of the sandy beach

Kagero Nikki: The sounds of carts

Rakuyo Dengakuki: The sounds of a grand ritual music performance held in the Eicho era

Composition & Arrangement: Marihiko Hara

Guitar: PolarM

Field Recording Assistance: Masumi Muranaka

Research Assistance: Rurihiko Hara

Sound Design: Raku Nakahara (KARABINERinc.)

/ Ohshiro Sound Office Inc.

Production: MHStudioInc. / TSUYURI

空間デザイン協力	Space design cooperation
Sandwich	Sandwich
京瓦タイル「キモノタイル」製作協力	Kyoto tile "Kimono tile" production cooperation
株式会社京瓦 浅田製瓦工場	ASADA KAWARA FACTORY
テーマ映像制作	Theme video production
株式会社 青空	AOZORA,LTD
テーマ音楽制作	Theme music production
原 摩利彦	Marihiko Hara

大阪・関西万博きょうと推進委員会